

WIRELESS ADVANCED CURRENT CONTROL TOOLS

BM serie





PRODUCTIVE SOLUTIONS

As an industrial process expert, we help you meet your challenges.

Productivity, safety, quality, industry 4.0 are themes on which we can offer you our expertise and our solutions. Whether in the field of assembly technology, machining or welding, our dedicated and specialized teams accompany your progress and recommend solutions and equipment to reach performance levels in line with your industrial strategy.



Certified quality

From design to commissioning, DOGA guarantees the quality of this equipment and services according to ISO 9001: 2015 certification.

5 Reasons to trust us



Expertise

Our Field experts propose solutions adapted to your environment and specific needs..



Innovation

By developing the products and the services of tomorrow, we offer you new perspectives or prospects.



Performance

Our high added value solutions improve your performance and guarantee the final quality of the production.



Commitment

Aware of your objectives, we commit ourselves to helping you to reach them.



Reliability

Our organization, which has been ISO 9001 certified since 1996, is the guarantee of your satisfaction.



ASSEMBLY TECHNOLOGY

As a world class assembly technology player, we manufacture and market equipment and solutions for the assembly industry which contribute to the improvement of your manufacturing quality and productivity.

Our assembly, ergonomics and traceability solutions contribute to enhancing your productivity, controlling your process quality and meeting the requirements of industry 4.0.

We offer products designed to last and high value-added services by relying on our team's know-how and expertise: design, production, installation, start-up, training and maintenance. We support you locally thanks to our worldwide presence through our subsidiaries and our specialized distribution network.



Contact us

@ international@dogas.com

+33 1 30 66 41 41

www.dogasassembly.com

SUMMARY

WIRELESS ADVANCED CURRENT CONTROL TOOLS BM serie

▶ A RANGE OF POWERFUL AND CONNECTED WIRELESS SCREWDRIVERS	4
The range	5
Dimensions.....	7
Specifications.....	7
Features	8
Built-in digital display.....	8
Interconnections	9
Technical specifications	10
▶ ACCESSORIES	12
Battery.....	12
Battery charger	12
Protections	12
Communication modules	13
Rotating suspension rings	13
Fixed suspension rings	13
Side handle	14
Supports.....	14
Wireless bit tray BST-8W LCD Wi-Fi	14
▶ PARAMON-PRO X INTERFACE CONTROLLER (OPTIONAL)	15
Features	15
Specifications.....	15
Operation mode with job versus multi-screwdrivers mode.....	16
Sample job	16
Assembly process visualization in a Job	17
▶ RELATED PRODUCTS	18
▶ OUR SERVICES	19

A RANGE OF POWERFUL AND CONNECTED WIRELESS SCREWDRIVERS

BM serie battery-powered torque and angle screwdrivers are designed to meet your requirements for productivity, quality and traceability, while giving you great mobility.

Thanks to state-of-the-art on-board technologies, they can be directly connected to your network and 100% communicating. With no intermediate controller, they are resolutely geared to your Industry 4.0 projects.

These screwdrivers combine ergonomics, autonomy, multi-torque, multi-strategy and connectivity.

Their great versatility will meet your most demanding needs as well as classic screwing applications.

These «plug and play» screwdrivers are ready to produce in 1 minute!

Available in pistol version, with angle gear, barcode scanner and torque range from 0.1 to 49.1 Nm, are all equipped with color display and navigation buttons.



Ergonomy

- 2 models available: pistol and angle gear
- Wireless for greater mobility
- Lightweight, well-balanced tool
- 4 multi-function buttons: navigation, selection and interaction,...
- On-board AMOLED color display for fast visualization of results
- Easy setup and programming



Quality

- PREMIUM current control for optimum precision
- 15 screwdriving programs + 2 multi-sequences
- Advanced features (self-tapping, screwing at an angle,...)
- Precise speed control
- Torque-optimized free speed
- Optional integrated barcode reader (cycle selection and traceability)
- Traceability



Industry 4.0

- Integrated Web server for easy remote parameterization
- Real-time monitoring of tightening data and display of tightening curves
- Wi-Fi communication
- Modbus, Profinet, Ethernet IP communication protocols,...



Wireless pistol screwdrivers with current control BM serie

Ideal for horizontal screwing, our Li-ion wireless pistol-operated screwdrivers combine autonomy, multi-strategy, connectivity and optimal one-handed dexterity.

With their on-board color digital display, you can easily program and view results directly on the tool.

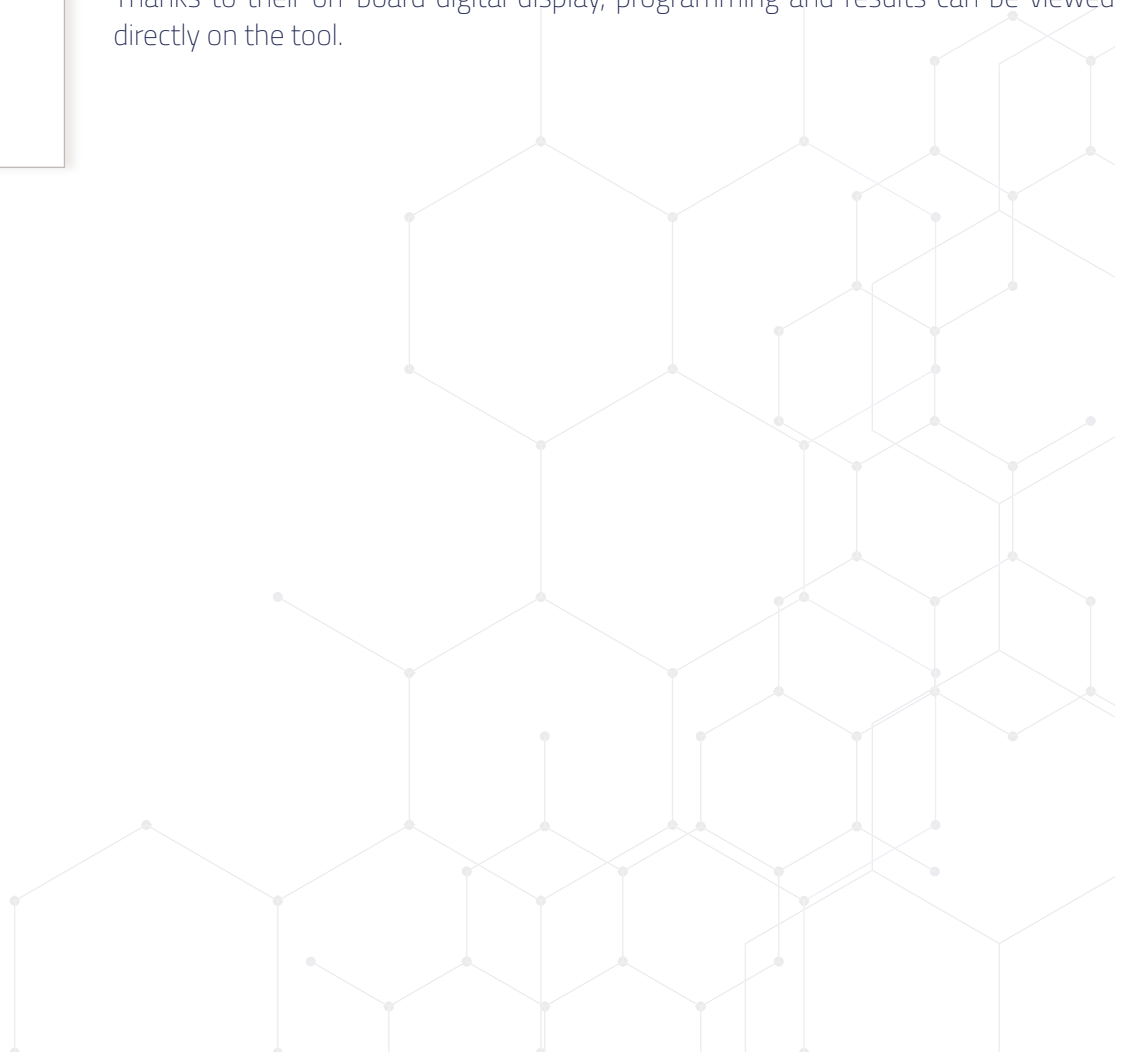


Wireless angle head screwdrivers with current control BMH serie

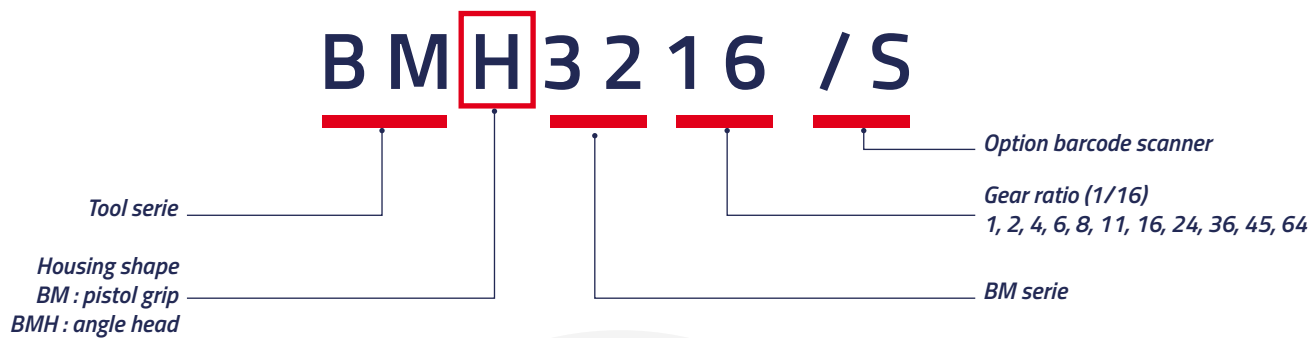
Wireless angle head screwdrivers with 360° angle drive can be used independently in hard-to-reach areas.

Their excellent ergonomics and two-handed operation enable them to be used over extender torque ranges.

Thanks to their on-board digital display, programming and results can be viewed directly on the tool.



Model designation



Ergonomy



Option 1D and 2D barcode scanner



Dimensions

BM & BMH : unit in mm



Specifications

Electric power	DC25.2V, lithium-ion battery
Motor	Swiss DC servo motor
Wi-Fi	IEEE 802.11a/b/g/n 2.4 GHz & 5 GHz dual band
Speed	Auto speed by torque setting
Data memory	65 000 data
USB	Micro USB port
Display	1.29" AMOLED color display
Number of presets	15 presets programming by USB or Wi-Fi 2 multi-sequences programs

Features

- ▶ Connected screwdrivers, Wi-Fi wireless communication, no need for box or additional accessories.
- ▶ « Plug & Play » stand-alone screwdrivers, ready to use in 1 minute.
- ▶ PREMIUM current-control guarantees precision over the entire torque range of screwdrivers.
- ▶ Precise closed-loop speed control with integrated digital angle sensor.
- ▶ Auto-speed setting by torque.
- ▶ Digital torque and angle program in 15 presets and 2 multi step sequence programs.
- ▶ Programming directly on the machine, via ParaMon software or web server (PC, tablet or smartphone).
- ▶ Quality monitoring of your product assembly with tightening strategies, batch counting, assembly visualization and logical input / output management (Job Manager function with ParaMon-Pro X controller).
- ▶ Detailed display of events.
- ▶ Real-time torque data and curve displayed via ParaMon software or web server.
- ▶ Real-time fastening data output by USB and Wi-Fi.
- ▶ Modbus TCP protocol.
- ▶ Protocol Profinet, TCP / Ethernet IP... (available as option).
- ▶ Integrated 1D and 2D barcode scanner (optional) for automatic program selection and traceability of screwdriving results.

Built-in digital display



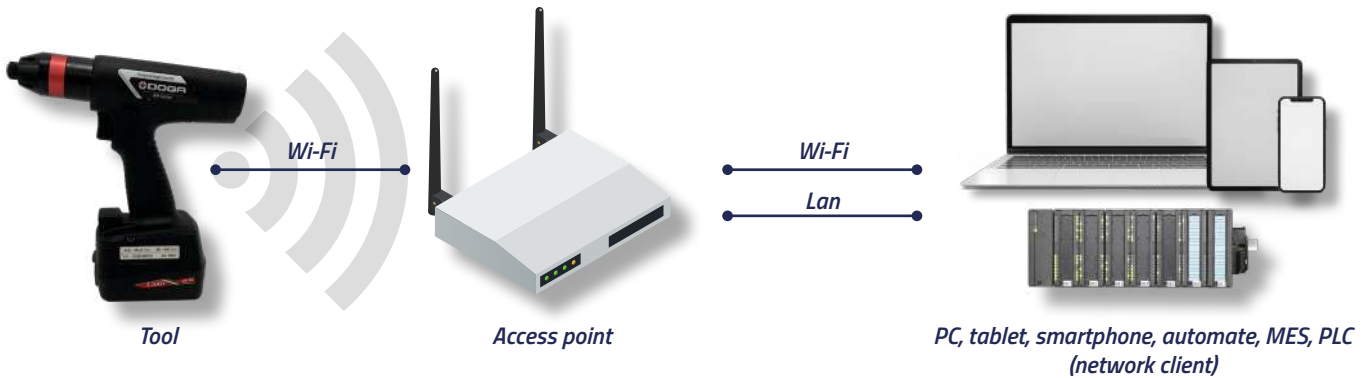
Interconnections

USB connection



- ▶ Initial network and parameter settings, data monitoring.
- ▶ Data download from the internal memory (max 65 000).
- ▶ Easy screwdriver firmware update.

Wi-Fi connection to a PC, smartphone, tablet, automate or MES via an access point



- ▶ Parameter settings, data monitoring on PC.
- ▶ Free communication protocol (Modbus TCP) for client application communication (PLC, PC,...).
- ▶ Profinet, TCP / Ethernet IP protocol... (available as option).

Wi-fi connection to ParaMon-Pro X controller (optional)



- ▶ Connect up to 8 BM tools.
- ▶ Job Manager : product assembly quality control with tightening strategies, batch counting, assembly visualization, I/O logic management and operator assistance.
- ▶ Simple and user friendly sequence programming interface.
- ▶ 4 USB 2.0 ports - 1D and 2D barcode scanner (optional) - HDMI port for display extension.

Technical specifications



Pistol wireless DC Tools BM serie - Standard models

Designation	Torque (min. Nm)	Torque (max. Nm)	Speed (tr / min.)	Weight* (kg)	Lenght L (mm)	Drive	Code
BM3201-A	0,1	1,2	100 ~ 2 000	0,9	192	Hex 1/4"	P113269
BM3202-A	0,2	2,2	100 ~ 2 000	0,9	192	Hex 1/4"	P107054
BM3204-A	0,4	4,4	100 ~ 1 800	1	205	Hex 1/4"	P105789
BM3206-A	0,6	6,4	100 ~ 1 250	1,1	212	Hex 1/4"	P102027
BM3211-A	1,5	11,3	50 ~ 690	1,1	217	Hex 1/4"	P104366
BM3216-A	2	15,7	50 ~ 470	1,1	217	Hex 1/4"	P103895
BM3224-A	3,9	23,5	50 ~ 310	1,1	227	Hex 1/4"	P137296
BM3224-Q 3/8	3,9	23,5	50 ~ 310	1,1	227	SQ 3/8"	P116809

*Weight without battery.

Pistol wireless DC Tools BM serie - Models with 1D and 2D barcode scanners



Designation	Torque (min. Nm)	Torque (max. Nm)	Speed (tr / min.)	Weight* (kg)	Lenght L (mm)	Drive	Code
BM3201-A/S	0,1	1,2	100 ~ 2 000	0,9	192	Hex 1/4"	P137313
BM3202-A/S	0,2	2,2	100 ~ 2 000	0,9	192	Hex 1/4"	P109215
BM3204-A/S	0,4	4,4	100 ~ 1 800	1	205	Hex 1/4"	P107134
BM3206-A/S	0,6	6,4	100 ~ 1 250	1,1	212	Hex 1/4"	P105825
BM3211-A/S	1,5	11,3	50 ~ 690	1,1	217	Hex 1/4"	P109221
BM3216-A/S	2	15,7	50 ~ 470	1,1	217	Hex 1/4"	P113421
BM3224-A/S	3,9	23,5	50 ~ 310	1,1	227	Hex 1/4"	P137314
BM3224-Q/S 3/8	3,9	23,5	50 ~ 310	1,1	227	SQ 3/8"	P137315

*Weight without battery.



Angle head wireless DC tools BM serie - Standard models

Designation	Torque (min. Nm)	Torque (max. Nm)	Speed (tr / min.)	Weight* (kg)	Dimensions			Drive	Code
					L (mm)	R (mm)	h (mm)		
BMH3204-A	0,4	4,4	100 ~ 1 800	1,4	465	13,5	62	Hex 1/4"	P113281
BMH3204-Q 3/8	0,4	4,4	100 ~ 1 800	1,4	465	13,5	57	SQ 3/8"	P109173
BMH3206-A	0,8	6,4	100 ~ 1 250	1,4	465	13,5	62	Hex 1/4"	P109169
BMH3206-Q 3/8	0,8	6,4	100 ~ 1 250	1,4	465	13,5	57	SQ 3/8"	P137293
BMH3211-A	1,5	11,3	50 ~ 690	1,6	479	13,5	62	Hex 1/4"	P137291
BMH3211-Q 3/8	1,5	11,3	50 ~ 690	1,6	479	13,5	57	SQ 3/8"	P116808
BMH3216-A	2	15,7	50 ~ 470	1,6	479	13,5	62	Hex 1/4"	P109171
BMH3216-Q 3/8	2	15,7	50 ~ 470	1,6	479	13,5	57	SQ 3/8"	P105795
BMH3224-A	3,9	23,5	50 ~ 310	1,6	479	13,5	62	Hex 1/4"	P137292
BMH3224-Q 3/8	3,9	23,5	50 ~ 310	1,6	479	13,5	57	SQ 3/8"	P103897
BMH3236-Q 3/8	4,9	31,4	50 ~ 200	1,7	493	17	63	SQ 3/8"	P113327
BMH3245-Q 3/8	5,9	39,2	50 ~ 160	1,7	508	17	63	SQ 3/8"	P104368
BMH3245-Q 1/2	5,9	39,2	50 ~ 160	1,7	508	17	67	SQ 1/2"	P137294
BMH3264-Q 3/8	7,8	49,1	50 ~ 115	1,9	508	17	63	SQ 3/8"	P104997
BMH3264-Q 1/2	7,8	49,1	50 ~ 115	1,9	508	17	67	SQ 1/2"	P137295

*Weight without battery.



Angle head wireless DC tools BM serie - Models with 1D and 2D barcode scanners

Designation	Torque (min. Nm)	Torque (max. Nm)	Speed (tr / min.)	Weight* (kg)	Dimensions			Drive	Code
					L (mm)	R (mm)	h (mm)		
BMH3204-A/S	0,4	4,4	100 ~ 1 800	1,4	465	13,5	62	Hex 1/4"	P137316
BMH3204-Q/S 3/8	0,4	4,4	100 ~ 1 800	1,4	465	13,5	57	SQ 3/8"	P137317
BMH3206-A/S	0,8	6,4	100 ~ 1 250	1,4	465	13,5	62	Hex 1/4"	P137318
BMH3206-Q/S 3/8	0,8	6,4	100 ~ 1 250	1,4	465	13,5	57	SQ 3/8"	P137319
BMH3211-A/S	1,5	11,3	50 ~ 690	1,6	479	13,5	62	Hex 1/4"	P137320
BMH3211-Q/S 3/8	1,5	11,3	50 ~ 690	1,6	479	13,5	57	SQ 3/8"	P137321
BMH3216-A/S	2	15,7	50 ~ 470	1,6	479	13,5	62	Hex 1/4"	P113423
BMH3216-Q/S 3/8	2	15,7	50 ~ 470	1,6	479	13,5	57	SQ 3/8"	P137322
BMH3224-A/S	3,9	23,5	50 ~ 310	1,6	479	13,5	62	Hex 1/4"	P109223
BMH3224-Q/S 3/8	3,9	23,5	50 ~ 310	1,6	479	13,5	57	SQ 3/8"	P137323
BMH3236-Q/S 3/8	4,9	31,4	50 ~ 200	1,7	493	17	63	SQ 3/8"	P137324
BMH3245-Q/S 3/8	5,9	39,2	50 ~ 160	1,7	508	17	63	SQ 3/8"	P113427
BMH3245-Q/S 1/2	5,9	39,2	50 ~ 160	1,7	508	17	67	SQ 1/2"	P137325
BMH3264-Q/S 3/8	7,8	49,1	50 ~ 115	1,9	508	17	63	SQ 3/8"	P113429
BMH3264-Q/S 1/2	7,8	49,1	50 ~ 115	1,9	508	17	67	SQ 1/2"	P137326

*Weight without battery.

ACCESSORIES

Battery



Designation	BL25201
Voltage	25.2 V
Number of cells	3.6 V x 7
Capacity	3 Ah nominal
Dimensions	118x80x56 mm
Weight	505 gr
Code	P100254

▶ Do not use the battery for any other tool or purpose.

Battery charger



Designation	D25247A
Input	AC220-240 V, 50 / 60 Hz, 1.1 A
Output	DC18-25.2 V, 4.0 A
Fuse	250 VAC T3.15 A
Operating environment	0 ~ 40 / 15 ~ 80 % RH (without dew)
Full charging time	50 minutes
Safety class	Class II
Dimensions	210 x 114 x 72 mm
Weight	620 gr
Code	P100147

▶ LED display information:

- Charging ● Complete
- ◌ Blink « Battery overheat »
- ◌ Blink « Charging not possible »
- ◌ Blink « Ready »

Protections



Designation	Code
BM protection silicone pistol	P113515
RA BMH 3204 ~ 24 protection	P136947
RA BMH 3236 protection	P137297
RA BMH 3245 ~ 64 protection	P137298

Communication modules



Designation	Code
Communication module Modbus TCP to Profinet	P113165
Communication module Modbus TCP to Ethernet IP	P117308
Communication module settings	P179414

Others protocols on request. Wi-Fi access point not included.

Rotating suspension rings



Designation	Code
BMH 3204 ~ 24 rotating ring Ø 36.8 mm	P113217
BMH 3236 ~ 64 rotating ring Ø 39 mm	P136949
BM rotating ring Ø 41 mm	P136950

Fixed suspension rings



Designation	Code
BM collar Ø 41 mm	P136928
BM fixed suspension ring Ø 41 mm	P103909

Side handle



Designation	Code
BM 3204 ~ 24 side handle	P104374

Supports



Designation	Code
Pistol holster	P100140
Pistol or RA screwdriver support battery side	P101464

Wireless bit tray BST-8W LCD Wi-Fi



Designation	Code
Bit tray BST-8W LCD	P112477
Wi-Fi access point	P111954
Bit holder Ø 18 mm	P112988
Bit holder Ø 15 mm	P137305
Bit holder Ø 10 mm	P112712
Bit holder Ø 7,5 mm	P101221
Bit holder pre-drilled Ø 3 mm	P104894
Bit holder to be machined	P100402

- ▶ Bit tray 8 positions to BM and BMT series with its Wi-Fi and battery operation (same as screwdrivers).
- ▶ Assignment a programme to a bit; selection can be made by the screwdriver or by the tray, depending on the desired operating mode.
- ▶ Simple setup with a button-operated display giving access to all menus.
- ▶ It doesn't require a controller; communication is direct between the bit tray and the screwdriver, through a Wi-Fi access point (not compatible with ParaMon Pro X).
- ▶ Mechanical coding and detection of location errors by inductive sensors.

PARAMON-PRO X INTERFACE CONTROLLER (OPTIONAL)

Features



- ▶ Total 8 tools can be connected, BM / BMT / MD / MDT series.
- ▶ Management of parameters and programs for all connected screwdrivers.
- ▶ Data monitoring (visualization of graphs and results).
- ▶ Creation of screwing jobs (Job manager) : product assembly quality control with tightening strategies, batch counting, assembly visualization, I/O logic management and operator assistance.
- ▶ Tool remote control.
- ▶ Fastening data auto saving with file system.

Specifications

Input power	AC220 - 240 V, 50/60 Hz, 0.35 A
Dimensions	300 (L) x 196 (H) x 80 (P) - Wall mount bracket included
Display	10.1" TFT LCD touch
Communication ports	Ethernet, 4 x USB, barcodes reader, I/O (TOR inputs 16, TOR outputs 16), RS232
Memory	Internal memory: 16 Gb + slot for micro SD card up to 32 Gb (micro SD card not included)
Wi-Fi	USB 2.4 & 5 GHz dual-band Wi-Fi key (external)
Display extension	HDMI
Weight	3.54 kg
Code	P102478

Operation mode with job versus multi-screwdrivers mode

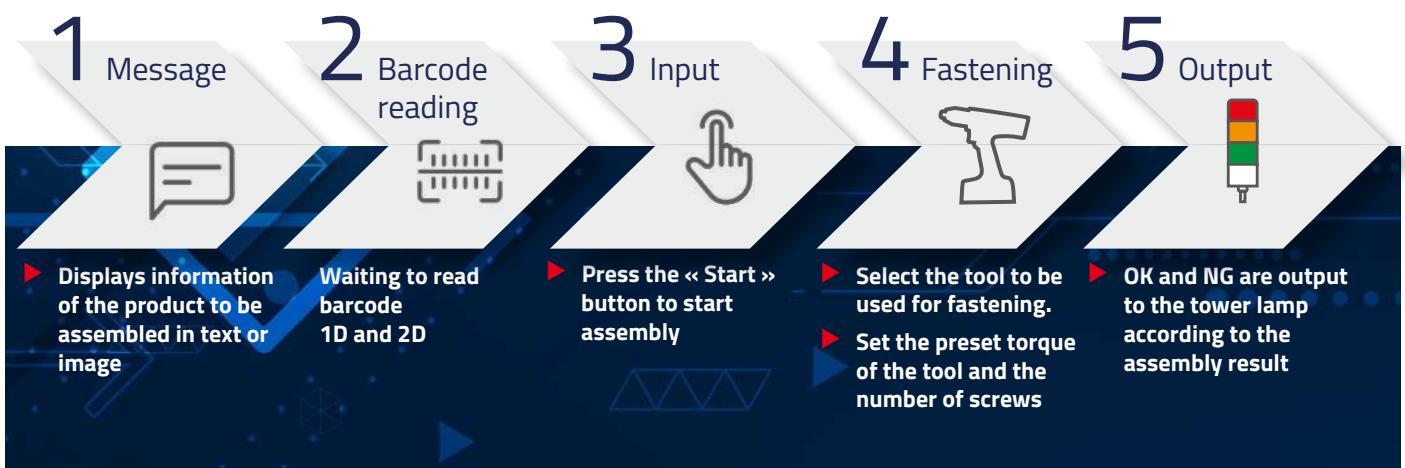


VS

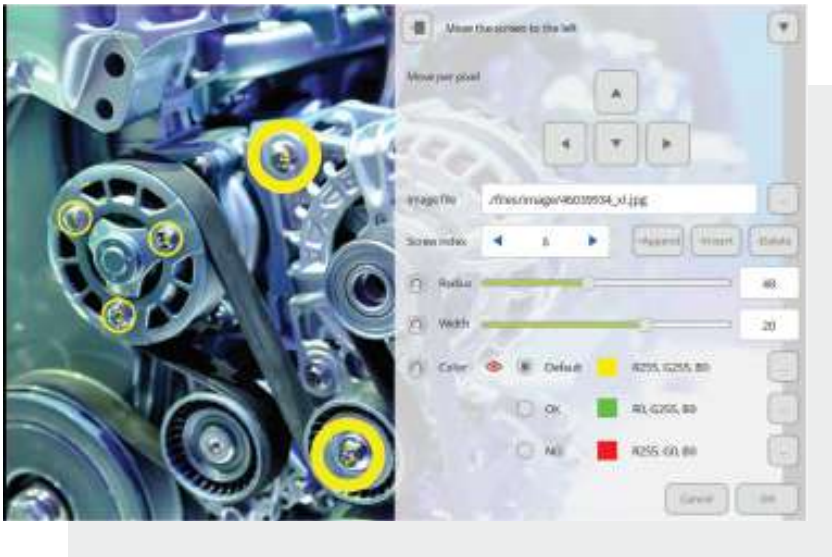


Operation mode	Job Manager (Sequencing mode with logical steps)	Multi-screwdrivers (Multi-tool tightening mode)
Features	<ul style="list-style-type: none"> 5 types of steps (fastening / input / output / delay / message) are provided for sequence programming. Interactive photo management with overlay of screwdriving points. The combination of steps is called a job. Up to 1 000 jobs are supported. Fastening data is auto saved in the file system. Job pause and resume modes. Additional screwdriving programs available. 	<ul style="list-style-type: none"> Not support process control. Display fastening data receiving from tools in real-time. Fastening data is auto saved in the file system.
Screwdrivers	<ul style="list-style-type: none"> The tool works only in the fastening step. In the fastening step, only one tool can be assigned. Two or more tools cannot work simultaneously. Suitable for single operator environments. 	<ul style="list-style-type: none"> No restriction on the use of the tool. All tools can work simultaneously. Suitable for multiple operator environments
Barcodes scanner	<ul style="list-style-type: none"> To load the desired job by scanning barcode. Components traceability. 	<ul style="list-style-type: none"> To select the preset torque on the tools.

Sample job



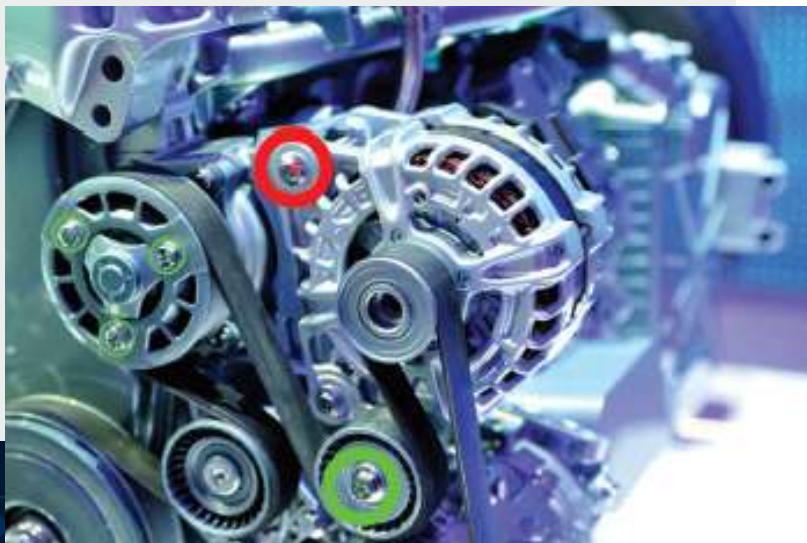
Assembly process visualization in a Job



Visualize the assembly procedure with just a few clicks

- ▶ From a picture of the work-piece.
- ▶ Set position of screw according to the fastening order.
- ▶ Up to 99 screws can be set per fastening step.
- ▶ Radius / width of the circle can be adjusted to fit the size of the screw.
- ▶ Color of the product and color of the circle overlap, you can change the color of the circle.

Below is the screen that is actually performing the job.



RELATED PRODUCTS



Process management and monitoring

Monitor all production steps and achieve compliance with our IHM and bit socket trays.

- Sequencing and process monitoring interface - DPC Touch
- Bit socket trays
- Socket tray

> [Learn more about our solutions for process management and monitoring](#)



Sockets, bits et accessories

We have a wide range of bits, sockets and accessories for your screws and nuts, in all shapes and materials.

- Standard and special impact sockets
- Bits, special bits, bits holders and accessories
- Accessories

> [Learn more about our range of sockets, bits and accessories](#)



OUR SERVICES

At DOGA we put at your disposal our reliable, accurate and user-friendly tightening solutions. It is our duty to advise you of the right solution for your application. Our Product Manager and Support engineering teams are here to analyze your manufacturing process and share with you our innovative solutions to improve your assembly process. Thanks to our technical integration service CELPRO, we provide you with turnkey solutions from design to commissioning.



TURNKEY SOLUTIONS

Using all the options of our complete product range, we offer you solutions adapted to your needs.

- ▶ Custom Design
- ▶ Adaptation of existing models
- ▶ Integration of automation system



TECHNICAL ASSISTANCE

To ensure the optimal performance and durability of our tools, we put our technical assistance at your disposal.

- ▶ Installation and start-up
- ▶ Maintenance agreement
- ▶ On-site maintenance
- ▶ Maintenance in our workshop



TRAINING

DOGA offers specialized training courses for our industries:

- ▶ Technical & practical
- ▶ Audit & Consulting

Find all our ASSEMBLY TECHNOLOGY
products on our website by scanning
this QR code



DOGA[®] | ASSEMBLY
TECHNOLOGY

📧 international@doga.fr

☎ +33 1 30 66 41 41

📍 8, avenue Gutenberg - CS 50510
78317 Maurepas Cedex - FRANCE

© DOGA | DOC.60338.10/24

We constantly strive to improve our products. As a result, the dimensions and indications in this document may not always correspond to the latest production. By explicit agreement, our sales are subject to a reservation of title (the provisions of the French 05/12/1980 Act are therefore fully applicable).

www.dogasassembly.com